

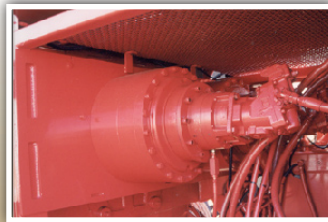
# PREDATOR SHREDDER

- Easy access to hydraulics making maintenance easy and fast and minimizing downtime.
- Heavy-duty breaker beam allows sizing of the end product.
- Powerful cross belt magnet removes heavy ferrous metal contaminants from discharge stream/end product.
- Dual belt discharge system allows for increased discharge capacity.
- Dual rotors provide the ability to shred a variety a materials without wrapping around a single rotor.
- Discharge conveyor folds hydraulically for transport.



## DUAL ROTORS

*Each hooked star has a double edged tooth staggered across the star for 100 percent coverage for grabbing and ripping in both directions.*



## DRIVE SYSTEM

*Two 144:1 reducing transmissions produce a million inch pounds of torque to each rotor.*



## MORBARK INTEGRATED CONTROL SYSTEM

*Boost production levels and substantially minimize downtime with this smart system uniquely programmed to Morbark machines.*



## CAB & LOADER

*Also available with a cab and loader eliminating the need for additional support equipment.*



## SPECIFICATIONS

Note: Specifications may vary with equipment options

03152010

### PREDATOR STANDARD

Operating Length.....38'6"  
 Transport Length.....30'6"  
 Operating Height .....11'11"  
 Transport Height.....8'10"  
 Width.....8'2-1/2"  
 Gross Weight .....44,000 lbs.  
 Horsepower Range.....335-450

Gross Weight..... 61,000 lbs.  
 Horsepower Range..... 335-450

### PREDATOR WITH CAB/LOADER

Operating Length..... 58'  
 Transport Length ..... 39'  
 Operating Height ..... 17'  
 Transport Height..... 13'6"  
 Width ..... 11'1"  
 Gross Weight..... 76,020 lbs.  
 Horsepower ..... (CAT C-13) 440;  
 ..... (CAT C4.4) 114  
 Telescoping Cab raises 22"

### PREDATOR 5th WHEEL FRAME

Operating Length..... 58'  
 Transport Length ..... 39'  
 Operating Height ..... 17'  
 Transport Height..... 13'6"  
 Width ..... 11'1"

### FEED HOPPER

76" x 98" fixed section, 98" x 139" pivoting section which raises hydraulically to a 45 degree angle

### OPTIONS

Electric power  
 Fifth wheel frame  
 Cab & Loader  
 Rotating Cab



800-831-0042 989-866-2381  
 www.morbark.com